

SOLEO - Music in Motion



TECHNICAL REQUIREMENTS and HOSPITALITY RIDER

TOURING CREW

5 to 6 people on tour : 3 artists, 2 stage managers (1 production manager in some cases).

Artistic crew

- Sophie Boucher or Jean Adam or Mélanie Martel
- Sébastien Leguenanff or Lucie Delmas or François Daniel
- Julien Vasnier or Mathieu Cervera or Rémi Leclerc

Technical crew

- Sound : Benoit Chabert D'Hières
- Lighting : Benjamin Croizy

CONTACTS

Production manager

Cassandre Cuman
+33 7 82 67 47 69
cassandre@lesentetes.com

Stage & Tour manager

Lucie Delmas
+33 6 65 09 09 91
lucie.delmas@club-internet.fr

Sound engineer

Benoît Chabert D'Hières
+33 6 88 43 52 88
chabb@free.fr

Lighting engineer

Benjamin Croizy
+33 6 82 27 37 65
benjamincroizy@posteo.net

SCHEDULE

The set-up of the lighting plot is required before the arrival of company.

We need a minimum of 4 hours to set-up, 1 hour soundcheck and 1 hour rehearsals on stage.

Minimum staff requirements, from loading to unloading the van : 1 lighting engineer and 1 sound engineer. Unset-up about 1 hour include unloading, depending of the configuration of the venue. Duration of the show : 55 min (or 35 min in some specific cases).

DRESSING ROOM

Please provide a clean and comfortable dressing room with mirrors, tables, chairs, garbage can...

Provide 6 small bottles of water by show (or gourds) and 3 sponge towels.

CATERING / MEALS

Provide enough food for the company's team in the dressing rooms : fruits, biscuits, tea/coffee, dried fruit, fruit juices...

About meals, preference for eating in the theatre before and after the show.

TRAVELING

The technicians and part of the artistic team travel by van. Measures : 4,80 m long and 2 m height. Please book a free parking space for our vehicle during the entire company's reception period.

In case of that parking cannot exceed the unloading time, please provide a parking space nearby.

In case of travel by plane, we'll need transfers between the airport, the hotel and the venue.

ACCOMODATIONS

Please book 5 (or 6 in some cases) single rooms + 5 breakfasts from the company's arrival to its departure. Depending on the performance schedule and the travel, some members may arrive one day before.

Preference for a place of accommodation close to the venue or train station. We accept twin-bedded in some cases, in agreement with the stage manager.

Provide a parking space in a secure location, suitable for our vehicle near the hotel as well.

SCENOGRAPHY / SET

The stage must be dark : black marley.

Thanks to provide one roll of black marley tape and one roll of black classic gaffer tape.

Measures of the stage : 10 m large x 7 m depth.



Stage & Tour manager
Lucie Delmas
+33 6 65 09 09 91
lucie.delmas@club-internet.fr

SOLEO

Updated 26.02.2021

Equipment provided by musicians :

- All microphones (except the SM58 for the Talkback)
- All HF Wireless systems
- All DI
- All computers
- All audio interface

- 1 Electric Bass
- 1 Midi Keyboard



Sound Equipment provided by the theater :

- 1 Digital Mixing Board (Midas M32 if possible) (16 inputs minimum)
With 2 stereo internal Aux for Reverbs (or 18 inputs if the reverbs are externals)
With 4 Mono external Aux Outputs for Stage Monitor A, B, C, D
- 16 HPF + 16 EQ Parametrics + 16 Compressors (Internal)
- 6 Graphic EQ 32 bands (Internal or external) (4 in insert for Wireless, and 2 for the Front)
- 4 good Stage Wedges on 4 independant circuits
- PA Stéréo sound system adapted to the venue + Sub
- All the stage box and audio-snake, link stage/desk
- All XLR cables
- 10 power strip (220V)

Backline provided by the theater (Pictures Below) :

- 1 Vibes (Musser or Yamaha)
- 3 Cajons
- 3 Four-legged stools
- 1 Scooter for adult
- 1 Bass Amp (Hartke, Fender, Markbass min 200W)
- 1 Wooden platform (100 x 75 x 12 cm)
- 1 Electro Acoustic Guitare with nylon new strings (CORT CEC model)

SOLEO - Musique en Mouvement



BACKLINE 1/2

Soleo needs this backline on stage, provided by the theater :

- 1 vibe (Musser or Yamaha)



- 3 cajons



- 1 bass guitar amplifier (Hartke, Fender, Markbass, Roland, 200W minimum)



BACKLINE 2/2 - SOLEO

- 1 wooden platform (100x75x12cm)



- 1 scooter for adult



- 3 four-legged stools



- 1 electro acoustic guitar with nylon strings (CORT CEC)



SOLEO

Stage pass

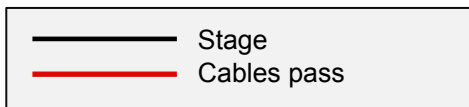
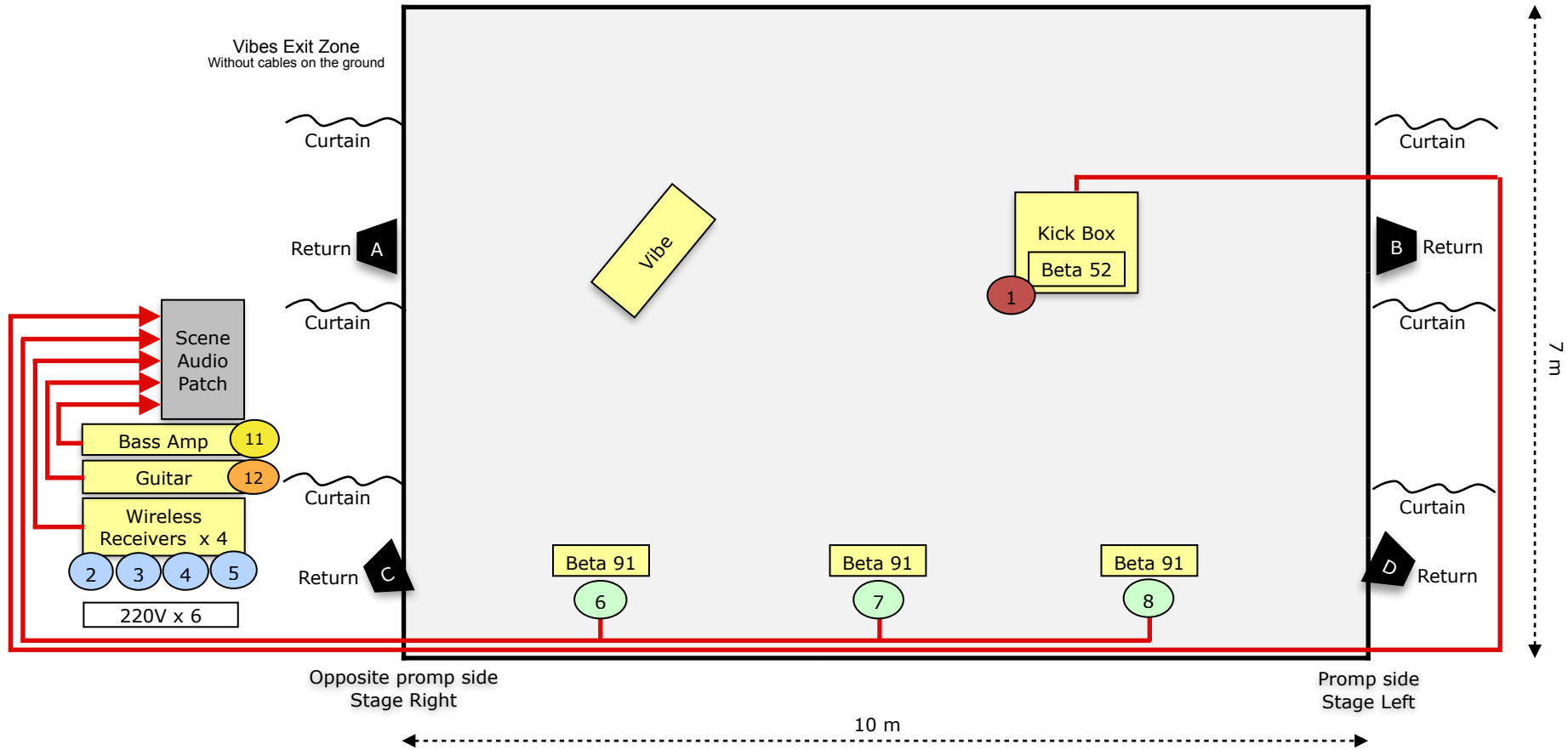
Updated 15.12.2022

Tech Sound

Benoit Chabert d'Hieres

+33 6 88 43 52 88

chabb@free.fr



n°	Sources	Micros/Line	48V	Traitments	Insert	To Stage Monitor
1	Kick Box (Under the wooden Platform)	Shure Beta 52		HPF EQ Comp		Aux : A, B
2	Body Percussion - Kiki (Julien Thigh)	DPA 4060 - Wireless Frq : 516 - 558 Mhz		HPF EQ Comp	EQ Graphic 31	
3	Body Percussion - Sophie	DPA 4080 - Wireless Frq : 470 - 516 Mhz		HPF EQ Comp	EQ Graphic 31	
4	Body Percussion - François	DPA 4080 - Wireless Frq : 470 - 516 Mhz		HPF EQ Comp	EQ Graphic 31	
5	Body Percussion - Julien	DPA 4080 - Wireless Frq : 470 - 516 Mhz		HPF EQ Comp	EQ Graphic 31	
6	Body Percussion - Floor	Shure Beta 91A	x	HPF EQ Comp		
7	Body Percussion - Floor	Shure Beta 91A	x	HPF EQ Comp		
8	Body Percussion - Floor	Shure Beta 91A	x	HPF EQ Comp		
9	Computer - L	Audio Interface - Linked		HPF EQ Comp		Aux : A, B, C, D
10	Computer - R			HPF EQ Comp		Aux : A, B, C, D
11	Electroacoustic Guitar	DI	x	HPF EQ Comp		Aux : A, B
12	Bass Guitar	DI		HPF EQ Comp		Aux : B
13						
14						
15						
16	Talkback	Shure SM 58 - NOT provided by us				Aux : A, B, C, D

Send Master Faders for Reverbs to have on channels 17 to 20, and if possible on the same console page as the 1-16 entries page

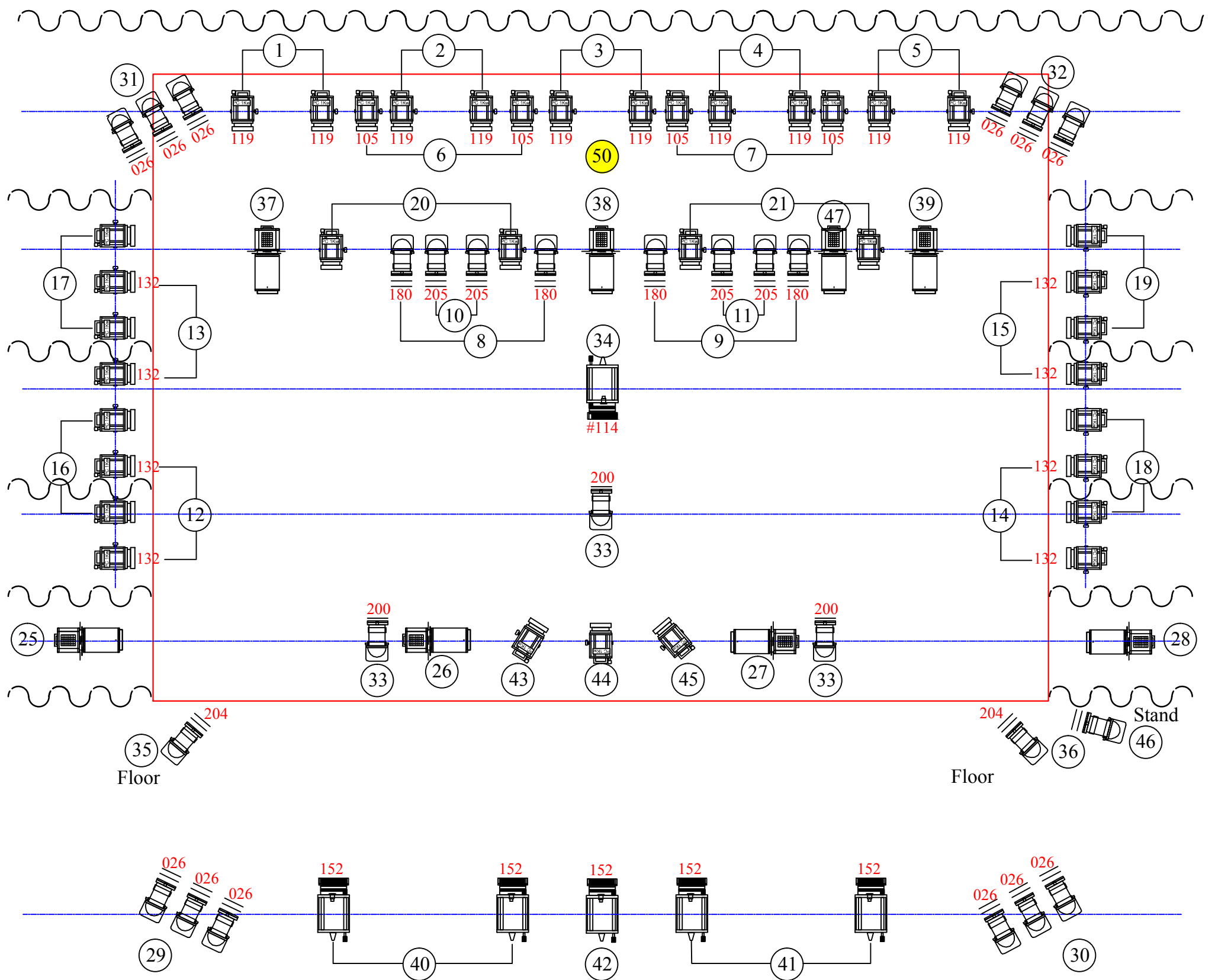
	Effets				
17	Short Reverb (Room - 1 sec) - L	Internal - Linked			
18	Short Reverb (Room - 1 sec) - R				
19	Long Reverb (Hall - 2 sec) - L	Internal - Linked			
20	Long Reverb (Hall - 2 sec) - R				

Send Master Faders for Stage monitors to have on channels 21 to 24, and if possible on the same console page as the 1-16 entries page

	Sources to send	Outputs	Traitments	Destinations
21	1 9-10 11 16	Aux A		Return - A (Back Stage Left)
22	1 9-10 11 12 16	Aux B		Return - B (Back Stage Left)
23	9-10 16	Aux C		Return - C (Front Stage Left)
24	9-10 16	Aux D		Return - D (Front Stage Left)
Mix - L	All the tracks	Out - L	EQ Graphic 31	Facade - L + Sub
Mix - R	All the tracks	Out - R	EQ Graphic 31	Facade - R + Sub
				Front Fill Stereo if necessary

SOLEO

Light plot 2021



Ideal dimensions : 10 x 7 m (wooden floor and black Marley)

1 m

Tech Light
Benjamin Croizy
+33 6 82 27 37 65
benjamincroizy@posteo.net

6		PC 2 KW
37		PC 1 KW
8		Extra short profile as 613 SX
3		PAR CP61
23		PAR CP62
105		Ref Lee Filters
50		Channel on floor (3 lamps 100 W provided)

NB : All PCs with frost 119#
The profiles channels 25 to 28 with frost 132#



Marc DUFURNET
Photographe