

# SOLEO - Musique en Mouvement



## TECHNICAL REQUIREMENTS and HOSPITALITY RIDER

### TOURING CREW

5 to 6 people on tour : 3 artists, 2 stage managers (1 production manager in some cases).

#### Artistic crew

- Sophie Boucher or Jean Adam or Mélanie Martel
- Sébastien Leguenanff or Lucie Delmas or François Daniel
- Julien Vasnier or Mathieu Cervera or Rémi Leclerc

#### Technical crew

- Sound : Benoit Chabert D'Hières
- Lighting : Benjamin Croizy

### CONTACTS

#### **Production manager**

Cassandra Cuman  
+33 7 82 67 47 69  
[cassandra@lesentetes.com](mailto:cassandra@lesentetes.com)

#### **Stage & Tour manager**

Lucie Delmas  
+33 6 65 09 09 91  
[lucie.delmas@club-internet.fr](mailto:lucie.delmas@club-internet.fr)

#### **Sound engineer**

Benoît Chabert D'Hières  
+33 6 88 43 52 88  
[chabb@free.fr](mailto:chabb@free.fr)

#### **Lighting engineer**

Benjamin Croizy  
+33 6 82 27 37 65  
[benjamincroizy@posteo.net](mailto:benjamincroizy@posteo.net)

### SCHEDULE

The set-up of the lighting plot is required before the arrival of company.

We need a minimum of 4 hours to set-up, 1 hour soundcheck and 1 hour rehearsals on stage.

Minimum staff requirements, from loading to unloading the van : 1 lighting engineer and 1 sound engineer. Unset-up about 1 hour include unloading, depending of the configuration of the venue. Duration of the show : 55 min (or 35 min in some specific cases).

### DRESSING ROOM

Please provide a clean and comfortable dressing room with mirrors, tables, chairs, garbage can...

Provide 6 small bottles of water by show (or gourds) and 3 sponge towels.

### CATERING / MEALS

Provide enough food for the company's team in the dressing rooms : fruits, biscuits, tea/coffee, dried fruit, fruit juices...

About meals, preference for eating in the theatre before and after the show.

## **TRAVELING**

The technicians and part of the artistic team travel by van. Measures : 4,80 m long and 2 m height. Please book a free parking space for our vehicle during the entire company's reception period.

In case of that parking cannot exceed the unloading time, please provide a parking space nearby.

In case of travel by plane, we'll need transfers between the airport, the hotel and the venue.

## **ACCOMODATIONS**

Please book 5 (or 6 in some cases) single rooms + 5 breakfasts from the company's arrival to its departure. Depending on the performance schedule and the travel, some members may arrive one day before.

Preference for a place of accommodation close to the venue or train station. We accept twin-bedded in some cases, in agreement with the stage manager.

Provide a parking space in a secure location, suitable for our vehicle near the hotel as well.

## **SCENOGRAPHY / SET**

The stage must be dark : black marley.

Thanks to provide one roll of black marley tape and one roll of black classic gaffer tape.

Measures of the stage : 10 m large x 7 m depth.



**Stage & Tour manager**  
Lucie Delmas  
+33 6 65 09 09 91  
[lucie.delmas@club-internet.fr](mailto:lucie.delmas@club-internet.fr)

# SOLEO

Updated 26.02.2021

## Equipment provided by musicians :

- All microphones (except the SM58 for the Talkback)
- All HF Wireless systems
- All DI
- All computers
- All audio interface
  
- 1 Electric Bass
- 1 Midi Keyboard

**Tech Sound**  
Benoit Chabert d'Hieres  
+33 6 88 43 52 88  
chabb@free.fr

## Sound Equipment provided by the theater :

- 1 Digital Mixing Board (Midas M32 if possible) (16 inputs minimum)  
With 2 stereo internal Aux for Reverbs (or 18 inputs if the reverbs are externals)  
With 4 Mono external Aux Outputs for Stage Monitor A, B, C, D
- 16 HPF + 16 EQ Parametrics + 16 Compressors (Internal)
- 6 Graphic EQ 32 bands (Internal or external) (4 in insert for Wireless, and 2 for the Front)
- 4 good Stage Wedges on 4 independant circuits
- PA Stéréo sound system adapted to the venue + Sub
- All the stage box and audio-snake, link stage/desk
- All XLR cables
- 10 power strip (220V)

## Backline provided by the theater (Pictures Below) :

- 1 Vibes (Musser or Yamaha)
- 3 Cajons
- 3 Four-legged stools
- 1 Scooter for adult
- 1 Bass Amp (Hartke, Fender, Markbass min 200W)
- 1 Wooden platform (100 x 75 x 12 cm)
- 1 Electro Acoustic Guitare with nylon new strings (CORT CEC model)

## SOLEO - Musique en Mouvement



### BACKLINE 1/2

Soleo needs this backline on stage, provided by the theater :

- 1 vibe (Musser or Yamaha)



- 3 cajons



- 1 bass guitar amplifier (Hartke, Fender, Markbass, Roland, 200W minimum)



**BACKLINE 2/2 - SOLEO**

- 1 wooden platform (100x75x12cm)



- 1 scooter for adult



- 3 four-legged stools



- 1 electro acoustic guitar with nylon strings (CORT CEC)



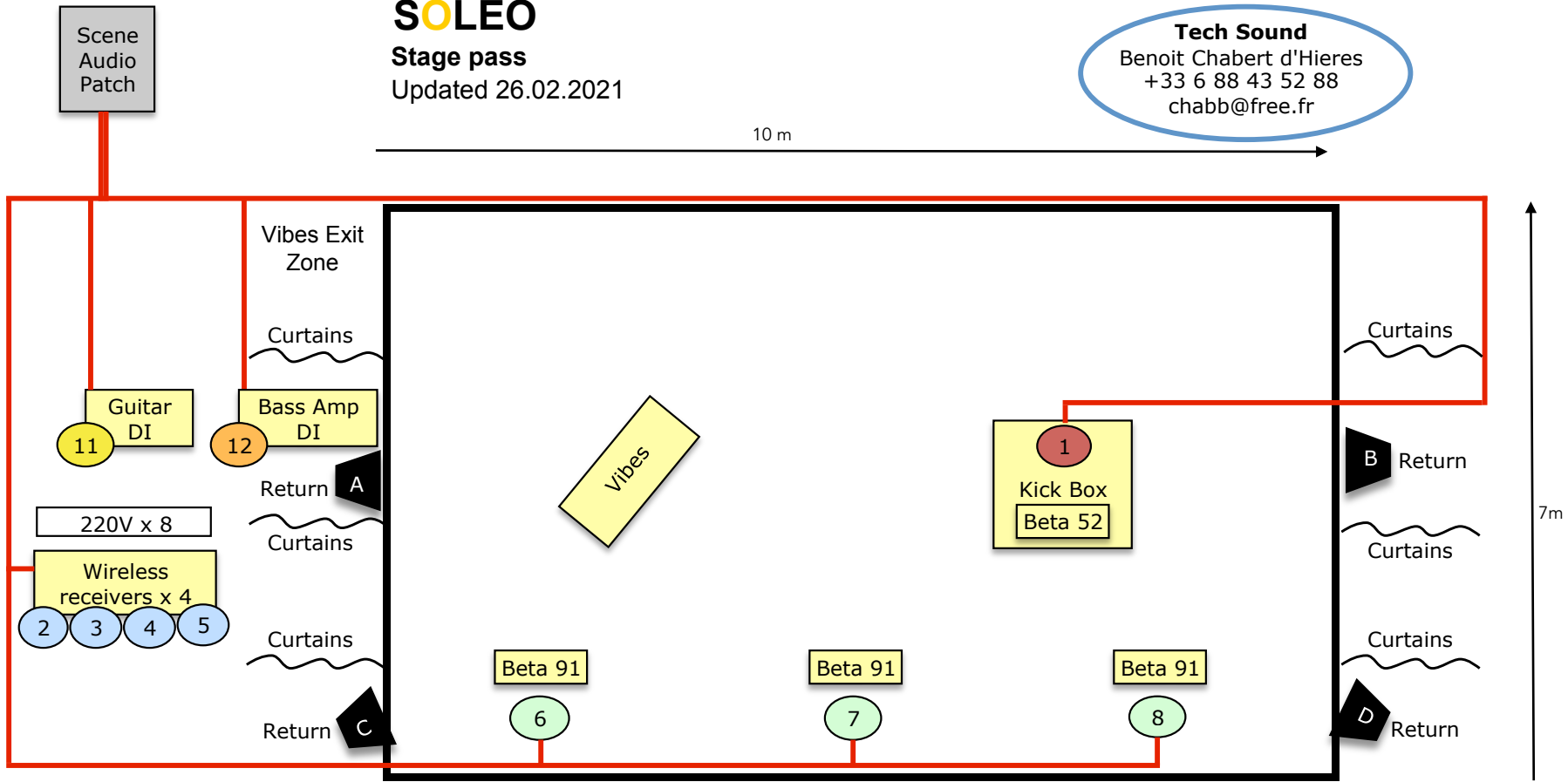
# SOLEO

Stage pass

Updated 26.02.2021

**Tech Sound**  
Benoit Chabert d'Hieres  
+33 6 88 43 52 88  
chabb@free.fr

10 m



Opposite prompt side  
Stage Left  
(Jardin)

Prompt side  
Stage Right  
(Cour)



Computers  
Stereo x 1  
DI x 2

9-10

220V  
x 8

n°	Sources	Micros/Line	48V	Traitments	Insert	To Stage Monitor
1	Kick Box (Under the wooden Platform)	Shure Beta 52		HPF EQ Comp		Aux : A, B
2	Body Percussion - Kiki (Julien Thigh)	DPA 4060 - Wireless Frq : 516 - 558 Mhz		HPF EQ Comp	EQ Graphic 31	
3	Body Percussion - Sophie	DPA 4080 - Wireless Frq : 470 - 516 Mhz		HPF EQ Comp	EQ Graphic 31	
4	Body Percussion - François	DPA 4080 - Wireless Frq : 470 - 516 Mhz		HPF EQ Comp	EQ Graphic 31	
5	Body Percussion - Julien	DPA 4080 - Wireless Frq : 470 - 516 Mhz		HPF EQ Comp	EQ Graphic 31	
6	Body Percussion - Floor	Shure Beta 91A	x	HPF EQ Comp		
7	Body Percussion - Floor	Shure Beta 91A	x	HPF EQ Comp		
8	Body Percussion - Floor	Shure Beta 91A	x	HPF EQ Comp		
9	Computer - L	Audio Interface - Linked		HPF EQ Comp		Aux : A, B, C, D
10	Computer - R			HPF EQ Comp		Aux : A, B, C, D
11	Electroacoustic Guitar	DI	x	HPF EQ Comp		Aux : A, B
12	Bass Guitar	DI		HPF EQ Comp		Aux : B
13						
14						
15						
16	Talkback	Shure SM 58 - <b>NOT provided by us</b>				Aux : A, B, C, D

**Send Master Faders for Reverbs to have on channels 17 to 20, and if possible on the same console page as the 1-16 entries page**

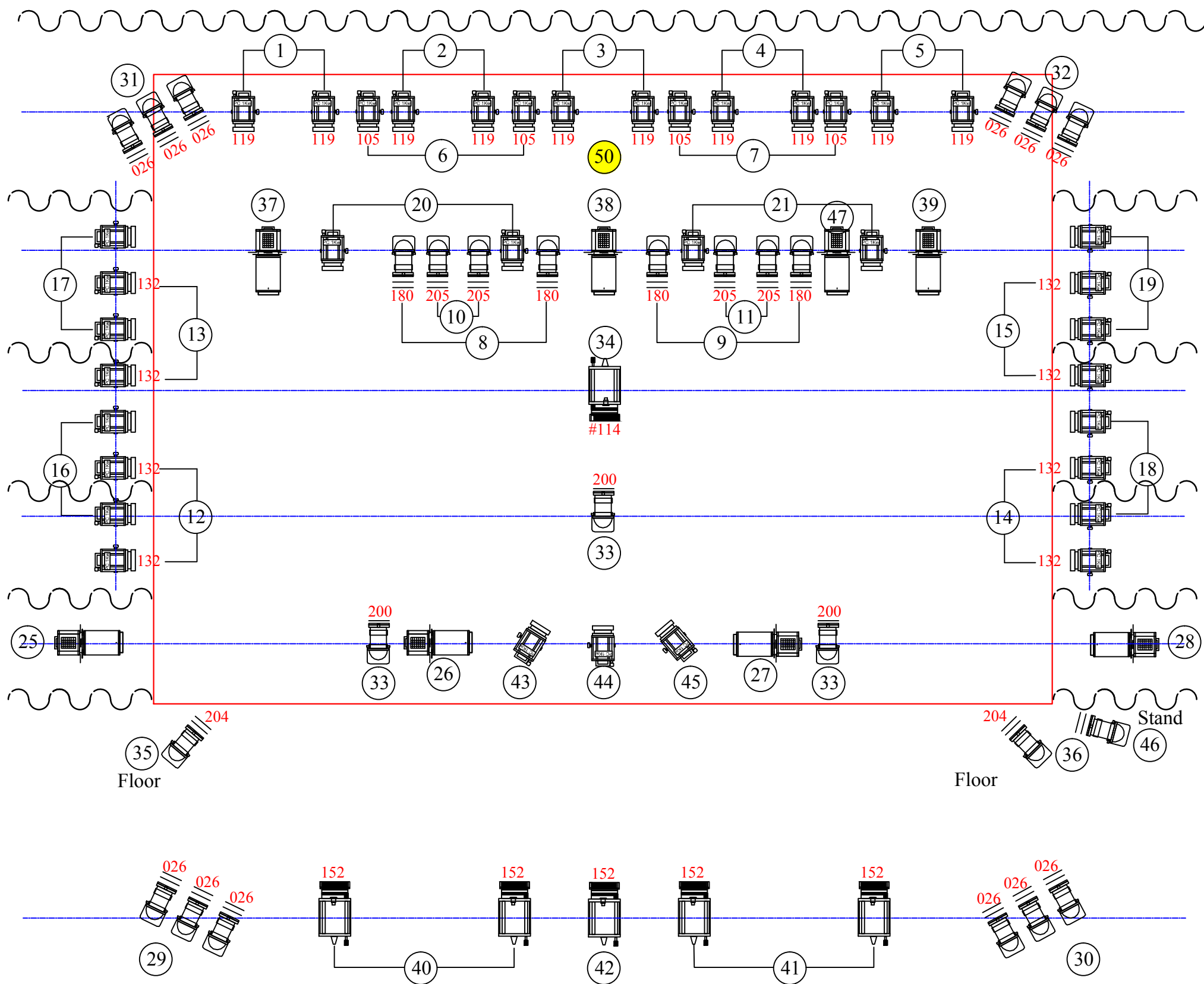
Effets						
17	Short Reverb (Room - 1 sec) - L	Internal - Linked				
18	Short Reverb (Room - 1 sec) - R					
19	Long Reverb (Hall - 2 sec) - L	Internal - Linked				
20	Long Reverb (Hall - 2 sec) - R					

**Send Master Faders for Stage monitors to have on channels 21 to 24, and if possible on the same console page as the 1-16 entries page**

	Sources to send	Outputs	Traitments	Destinations
21	1 9-10 11 16	Aux A		Return - A (Back Stage Left)
22	1 9-10 11 12 16	Aux B		Return - B (Back Stage Left)
23	9-10 16	Aux C		Return - C (Front Stage Left)
24	9-10 16	Aux D		Return - D (Front Stage Left)
Mix - L	All the tracks	Out - L	EQ Graphic 31	Facade - L + Sub
Mix - R	All the tracks	Out - R	EQ Graphic 31	Facade - R + Sub
				Front Fill Stereo if necessary

# SOLEO

Light plot 2021



Ideal dimensions : 10 x 7 m (wooden floor and black Marley)

1 m

**Tech Light**  
Benjamin Croizy  
+33 6 82 27 37 65  
benjamincroizy@posteo.net

6		PC 2 KW
37		PC 1 KW
8		Extra short profile as 613 SX
3		PAR CP61
23		PAR CP62
105		Ref Lee Filters
50		Channel on floor (3 lamps 100 W provided)

NB : All PCs with frost 119#  
The profiles channels 25 to 28 with frost 132#